



**NIFTY 11000 Hurray...**

## MORNING REPORT

Have Good Trading Day

TUESDAY



**Price is what you pay.  
Value is what you get.**

- Warren Buffet



## MARKET PULSE

### INDIAN INDICES

NAME	CMP	NET CH.	%
SENSEX	35798.01	+286.43	+0.81
NIFTY	10966.20	+71.50	+0.66

### INDIAN ADR'S

SYMBOL	CLOSE	GAIN/ LOSS %
DRREDDY	39.14	+1.22
HDFCBANK	106.04	-1.19
ICICIBK	10.96	+0.27
INFY	18.29	+1.67
TATA MOTOR	32.88	-0.66
WIPRO	5.46	-2.67

### FII AND MF ACTIVITY

SYMBOL	
FIIs Eq (Provisional)	+1567.51
DII's Eq (Provisional)	-461.87
FIIs Index Future	-1804.37
FIIs Index Options	-3511.05
FIIs Stock Future	+1077.01
FIIs Stock Options	+229.72

### CURRENCY

CURERNCY	RBI RATE
RUPEE - \$	63.8895
EURO	78.1241
YEN 100	57.6400
GBP	88.5956

## TOP STORY

- **Indian Oil Corporation** board to consider bonus issue on Jan. 30.
- **Kalpataru Power** gets multiple orders worth Rs 871 crore.
- **Torrent Pharma** to consider fund raising via bonds, share placement on Jan. 25.
- **Om Metals** reached an agreement with a Jaipur-based developer to withdraw claim on 56,000 square metre land.
- **Bajaj Corp.** introduced new Coco Jasmine hair oil.
- **Swaraj Engines** buyback to open on Jan. 31.
- **HSIL** commissions pipe manufacturing plant in Telangana.

## MARKET PULSE

### GLOBAL INDICES

NAME	CMP	NET CH.	%
DOW	26214.60	+142.88	+0.55
NASDAQ	7408.03	+71.65	+0.98
NIKKEI	24030.00	+213.67	+0.90
HANG SENG	32612.00	+220.00	+0.67
SGX NIFTY	10994.50	+27.00	+0.27

### WORLD COMMODITIES

FUTURE	CMP	%
CRUDE	64.01	+0.69
NATURAL GAS	3.256	+0.28
GOLD	1335.70	+0.29
SILVER	17.040	+0.30
COPPER	3.206	+0.16

### WORLD EVENTS

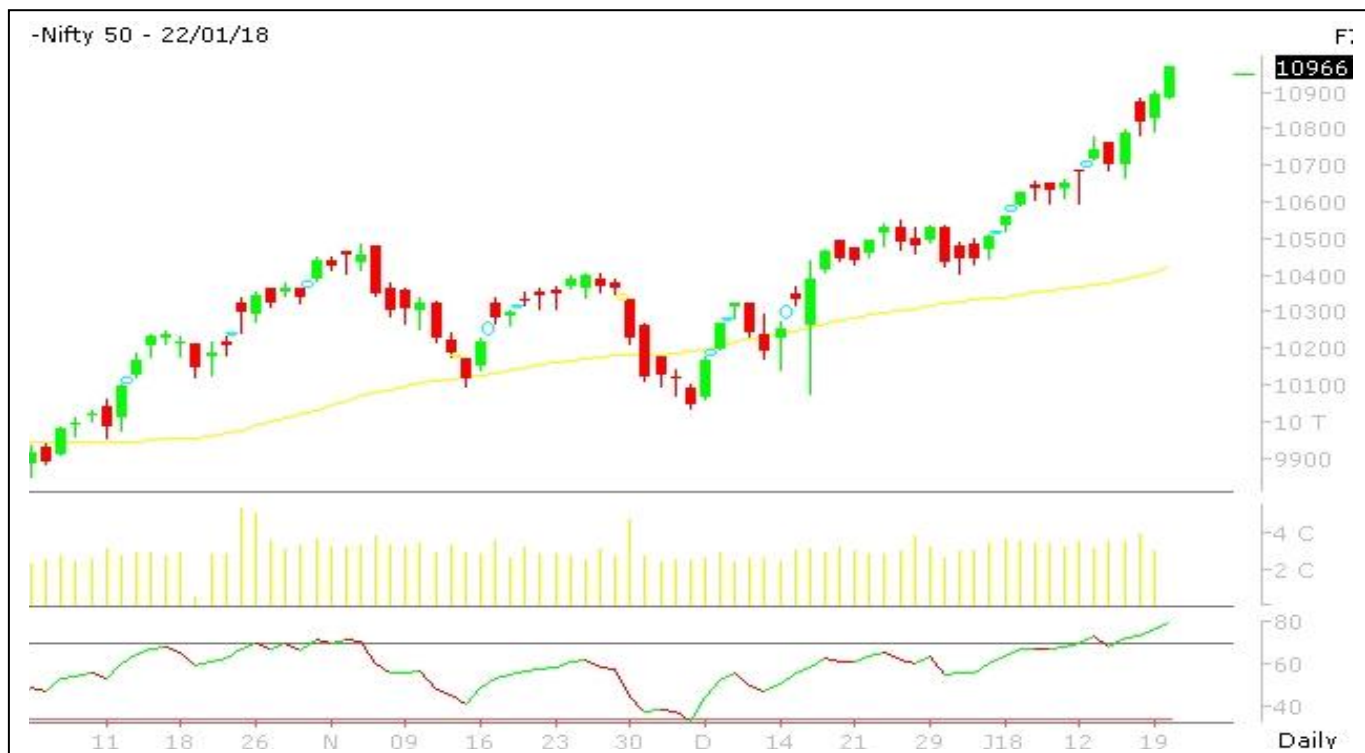
**GBP** : Public Sector Net Borrowing  
**EUR** : German ZEW Economic Sentiment

### RESULT TODAY

- CANFINHOME, CROMPTON, EDELWEISS, FORCEMOTOR, IBREALEST, NIITLTD, MENONBEAR, IBULHSGFIN, ORIENTHOT, PNBHSG, RBLBANK



## NIFTY CHART



## MARKET COMMENTARY

The Sensex gained 286.43 points or 0.81% to settle at 35,798.01, a record closing high. The index gained 316.12 points or 0.89% at the day's high of 35,827.70, a record high for the barometer index. The index rose 33.10 points or 0.09% at the day's low of 35,544.68.

The Nifty 50 index gained 71.50 points or 0.66% to settle at 10,966.20, a record closing high. The index gained 80.40 points or 0.74% at the day's high of 10,975.10, a record high for the index. The index fell 13.30 points or 0.12% at the day's low of 10,881.40.

The S&P BSE Mid-Cap index rose 0.63%. The S&P BSE Small-Cap index gained 0.78%. Both these indices underperformed the Sensex. The market breadth, indicating the overall health of the market, was positive. On the BSE, 1,567 shares rose and 1,326 shares fell. A total of 184 shares were unchanged.

Nifty likely to trade in the range of 10650-11100.

### MARKET LEVELS

	PIVOT	SUPPORT LEVELS				RESISTANCE LEVELS			
NIFTY	10865	10823	10752	10710	10650	10936	10978	11048	11100
USDINR	63.873	63.741	63.583	63.451	63.350	64.031	64.163	64.321	64.450





### BULK DEALS (BSE)

SCRIP	CLIENT NAME	BUY/SELL	QUANTITY	PRICE
AMSONS	ARCHANA VIVEK KHARE	B	162,000	4.54
SUPREMEX	VRAJ ENTERPRISES	B	294,500	23.63
STELLAR	GREATFIN LEASING & CREDIT LIMITED	S	228,000	4.1
INDOCO	RELIANCE CAPITAL TRUSTEE CO LIMITED A/C RELIANCE GROWTH FUND	B	1,211,050	275
IRBINVIT	PRUSIK UMBRELLA UCITS FUND PLC	B	5,825,000	87.17

### BULK DEALS (NSE)

SCRIP	CLIENT NAME	BUY/SELL	QUANTITY	PRICE
8KMILES	DSP BLACKROCK MUTUAL FUND	BUY	426281	748
CELESTIAL	DECCAN ENTERPRISES	SELL	322795	18.89
RELIGARE	IDBI TRUSTEESHIP SERVICES LTD	SELL	2255731	50.26
VIDEOIND	LTD YES BANK	SELL	1739740	21.27
SANCO	ALPA M GHELANI	SELL	75075	43.69

### SCRIP'S IN F&O BAN

(To resume for normal trading below 80% of market wide limit required)

- **In ban:** Balrampur Chini, Dewan Housing, DLF, Fortis, HCC, HDIL, IFCI, JP Associates, Just Dial, Kaveri Seed
- **New in ban:** Dewan Housing, JP Associates, Just Dial
- **Out of ban:** Dish TV, GMR Infra, Jain Irrigation

### Initial Public Offering (IPO)

Company Name	Security type	Issue Start Date	Issue End Date	Status



### NIFTY 50 STOCKS: SUPPORT & RESISTANCE

Symbol	Close	Support 1	Support 2	Pivot Point	Resistance1	Resistance2
ACC	1827	1811	1795	1822	1838	1849
ADANI PORTS	438	433	427	438	443	449
AMBUJACEM	268	266	264	268	270	272
ASIANPAINT	1176	1162	1148	1178	1192	1208
AUROPHARMA	641	637	632	640	645	648
AXISBANK	612	589	567	605	628	644
BAJAJ-AUTO	3275	3222	3170	3253	3305	3336
BANKBARODA	165	163	161	165	167	170
BHARTIARTL	491	486	482	492	497	503
BHEL	105	99	94	103	108	111
BOSCH LTD	19982	19846	19711	20010	20146	20310
BPCL	469	463	457	471	478	486
CIPLA	601	595	588	600	606	612
COALINDIA	285	283	280	286	289	292
DRREDDY	2497	2451	2406	2485	2530	2564
EICHERMOT	27650	27461	27271	27779	27968	28287
GAIL	457	448	440	460	469	481
HCLTECH	966	949	932	962	979	992
HDFC	1872	1849	1826	1887	1910	1947
HDFCBANK	1963	1948	1933	1968	1983	2003
HEROMOTOCO	3603	3587	3572	3605	3620	3637
HINDALCO	255	251	247	255	259	263
HINDUNILVR	1355	1346	1337	1356	1365	1374
ICICIBANK	352	347	342	350	355	358
IDEA	100	98	97	100	101	103
INDUSINDBK	1683	1675	1666	1685	1694	1704
INFRA TEL	344	339	335	344	348	353
INFY	1150	1136	1121	1146	1161	1171
ITC	274	272	270	274	276	277
KOTAKBANK	1074	1053	1031	1065	1087	1100
LT	1399	1324	1249	1364	1439	1478
LUPIN	930	921	913	927	936	942
M&M	760	754	749	762	767	775
MARUTI	9310	9269	9228	9313	9354	9398
NTPC	172	171	171	172	173	174
ONGC	201	197	194	202	205	210
POWERGRID	195	195	194	196	197	198
RELIANCE	972	950	928	962	984	996
SBIN	307	304	302	306	309	311
SUNPHARMA	576	570	565	575	580	585
TATAMOTORS	422	419	416	422	425	428
TATAMTRDVR	239	236	233	240	243	248
TATAPOWER	92	91	91	92	93	94
TATASTEEL	752	748	743	752	757	761
TCS	3116	2981	2845	3058	3193	3270
TECHM	570	555	541	564	578	587
ULTRACEMCO	4330	4279	4228	4312	4363	4395
VEDL	327	323	320	328	332	336
WIPRO	322	316	311	323	328	334
YESBANK	355	350	345	354	359	364
ZEEL	609	599	589	608	618	627



## NSE CIRCULARS

**NSE Download Ref No. : : NSE/SURV/36797:** Trade for Trade - Apollo Micro Systems Limited (APOLLO)w.e.f. Feb 06, 2018

**NSE Download Ref No. : : NSE/FAOP/36801:** Adjustment of Futures and Options contracts in the security PEL w.e.f. Jan 31, 2018

**NSE Download Ref No. : : NSE/CML/36799:** Listing of further issues of IDFC Bank Limited, IndusInd Bank Limited and Lupin Limited w.e.f. Jan 23, 2018

**NSE Download Ref No. : : NSE/ISC/36800:** Change in Investor Services Centre location at Chennai w.e.f. Jan 29, 2018

**NSE Download Ref No. : NSE/INVG/36802:** SEBI Order in the matter of Hahnemann Herbal Limited. with immediate effect.

**NSE Download Ref No. : : NSE/CML/36805:** Listing of further issues of Blue Star Limited, DCB Bank Limited and DCW Limitedw.e.f. Jan 23, 2018





## NEWS & RUMOURS:

- **Gold (Spot Dollar) major support = \$1314/\$1292 & Resistance = \$1365/\$1392.**
- **Crude oil range (WTI)->\$58 to \$68.**
- **Stocks Mixed, Treasuries Rise as Shutdown Drags On: Markets Wrap:**
  - Stocks fluctuated as investors discounted the impact of the U.S. government's partial shutdown and look toward a busy week of earnings. The dollar weakened and Treasuries halted a recent selloff.
- **The dollar slipped against most major currencies along with 10-year Treasury yields as Congress remained at an impasse over funding the government for a third day.** The euro climbed on optimism that German Chancellor Angela Merkel has made a potential breakthrough toward a fourth term.
- **Gold Prices Pare Losses, Hold Steady with U.S. Politics in Focus:** - Gold prices pared losses and held steady on Monday, as traders continued to evaluate the consequences of the U.S. government shutdown on Friday. The U.S. government shutdown entered a third day after the Senate failed to reach a deal Sunday night to fund government operations.
- **Crude Oil Prices Edge Lower in Cautious Trade:** - Crude oil prices edged lower on Monday, despite support from recent comments by Saudi officials, as traders were still assessing U.S. production levels. Prices found support after Saudi Energy Minister Khalid al-Falih said on Sunday that OPEC and non-OPEC oil producers have a consensus that they should continue cooperating on production after the end of 2018, when their current agreement on production cuts expires. Falih added that this might mean a new form of deal rather than continuing the same supply cuts that have boosted prices in recent months.

## TRENDS & OUTLOOK – DATE: 23-JAN- 2018

### PRECIOUS METALS:

COMMDITY (MCX)	S2	S1	PIVOT POINT	R1	R2
GOLD (Feb)	29250	29500	29820	30130	30390
SILVER (Mar)	37200	38100	39060	40370	41499

### BASE METALS

COMMDITY (MCX)	S2	S1	PIVOT POINT	R1	R2
COPPER (Feb)	441.25	446.20	453.25	460.50	465.70
ZINC (Jan)	211.30	215.10	219.30	223.75	227.50
LEAD (Jan)	160.45	162.70	166.45	170.55	174.25
NICKEL (Jan)	770	785	813	834	857

### ENERGY

COMMDITY (MCX)	S2	S1	PIVOT POINT	R1	R2
CRUDE OIL (Feb)	3850	3960	4050	4170	4285
NATURAL GAS (Jan)	194	199	205	212	219

### DATA TALKS : TODAY'S ECONOMIC DATA :

Monetary Policy Statement of JPY, BOJ Outlook Report, BOJ Policy Rate, BOJ Press Conference, WEF Annual Meetings, German ZEW Economic Sentiment, ECOFIN Meetings of EUR, Richmond Manufacturing Index.





LET THE  
WOMAN  
POWER RISE

**WOMEN  
DESK**

All the Ladies in the house are  
cordially invited to come  
& explore their trading talents.

**TOLL FREE: 18001030059**



# SIP CALCULATOR

Calculates the  
Future Value  
of an  
Investment



SIP Amount (Rs.)  
**10,000**



Investment Frequency  
**Monthly**



Expected Return (p.a.)  
**14.00%**

Year	Principal (Rs.)	Future Value (Rs.)	Appreciation
1	120,000	128,918	8,918
2	240,000	275,884	35,884
3	360,000	443,426	83,426
4	480,000	634,423	154,423
5	600,000	852,161	252,161
10	1,200,000	2,492,923	1,292,923
15	1,800,000	5,652,071	3,852,071
20	2,400,000	11,734,741	9,334,741
25	3,000,000	23,446,403	20,446,403
30	3,600,000	45,996,206	42,396,206
35	4,200,000	89,413,927	85,213,927
40	4,800,000	173,011,040	168,211,040
45	5,400,000	333,970,140	328,570,140
50	6,000,000	643,883,137	637,883,137



**Indira Securities Pvt. Ltd**

Member: NSE, BSE, CDSL

**Indira Commodities Pvt. Ltd.**

Member: MCX, NCDEX

**Registered Office**

Indira House, 3rd Floor, 5 Topiwala Lane,  
Opp. Lemington Road Police Station, Grant Road (East), Mumbai - 400007.

**Corporate Office**

204 Amardarshan Building 3<sup>rd</sup> floor, Saket Nagar, Indore - 452018 (M.P.)

**Customer Care**

Tel: +91-731-4797170/ 71/ 72/ 73/ 74 M. +91 93031 72345

Email: [customercare@indiratrade.com](mailto:customercare@indiratrade.com) [www.indiratrade.com](http://www.indiratrade.com)

**INSTITUTIONAL DEALING UNIT**

Africa House, 5, Topiwalla Lane, Lamington Road, Mumbai, 400007

Tel: +91 2230080678; Email: [ie@indiratrade.com](mailto:ie@indiratrade.com)

**Disclaimer**

This report is for private circulation within the Indira Group. This report is strictly confidential and for information of the selected recipient only and may not be altered in any way, transmitted to, copied or distributed, in part or in whole, to any other person or to the media or reproduced in any form. This report should not be construed as an offer or solicitation to buy or sell any securities or any interest in securities. It does not constitute a personal recommendation or take into account the particular investment objectives, financial situations, or any such factor. The information, opinions estimates and forecasts contained here have been obtained from, or are based upon, sources we believe to be reliable, but no representation of warranty, express or implied, is made by us to their accuracy or completeness. Opinions expressed are our current opinions as of the date appearing on this material only and are subject to change without notice.